



NATEVBA

(vevasumab)

Indicated for XA+ non-Hodgkin's lymphoma



An innovative new treatment targeting X-antigen¹



Natevba delivers over two years median PFS²



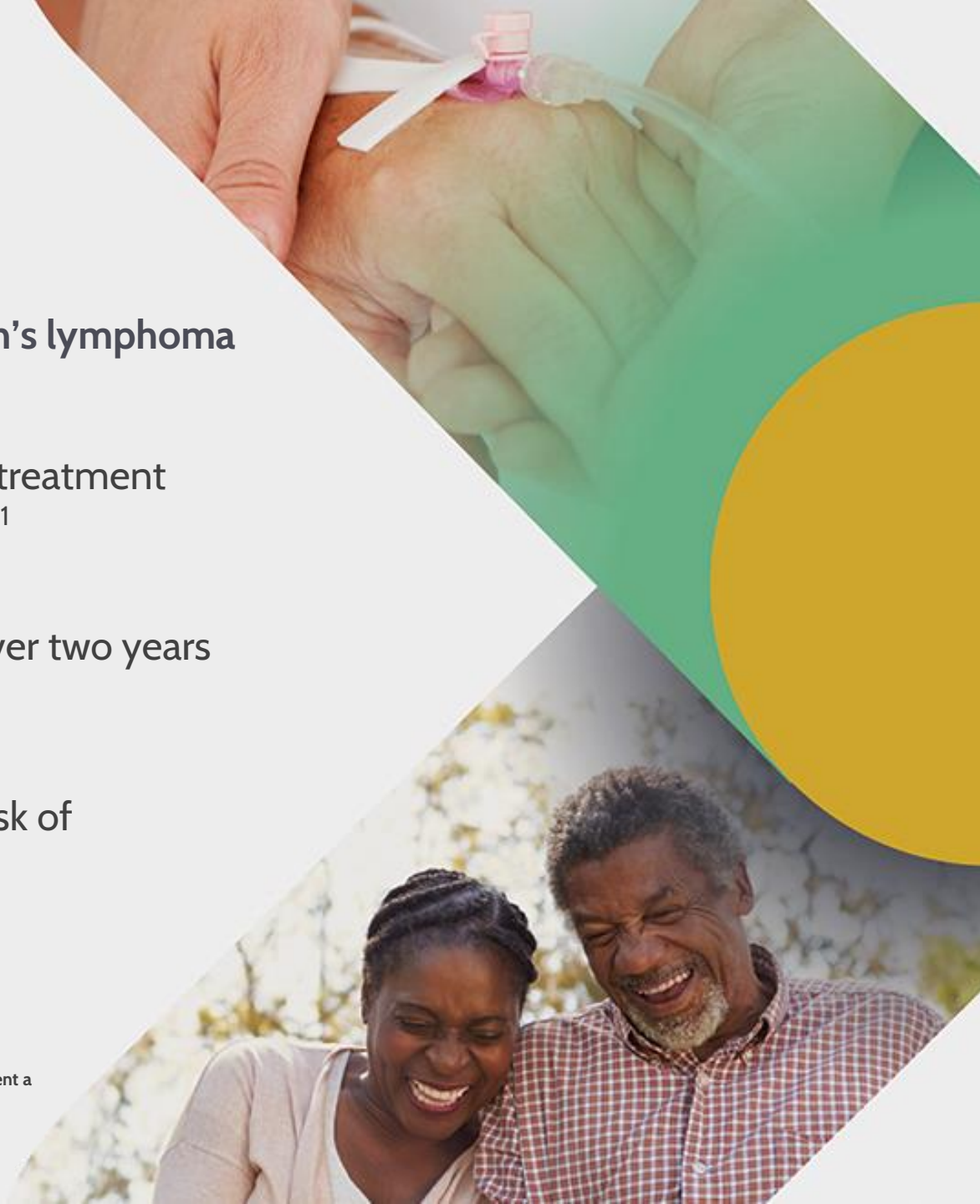
45% reduction in risk of progression²

NHL = non-Hodgkin's lymphoma ; XA+ = X-antigen-positive

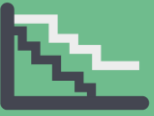
1. Natevba® (vevasumab) Full Prescribing Information.

2. Vincent A. et al. *Cancer Therapy and Management* 2020;22(1):87-88.


XA+ NHL is a fictional subtype of a real disease. All content shown here, including claims, data and references, are fictional and intended to represent a hypothetical clinical scenario




Natevba offers durable efficacy for XA+ NHL patients unresponsive to conventional therapy (rrXA+ NHL)¹




25.2 months
mPFS¹

See the data 




Meaningful
improvements in
QoL (EORTC-
QLC C30)


See the data 



VISION Phase II Study
in rrXA+ NHL



48% response
rate in rrXA+
NHL

See the data 

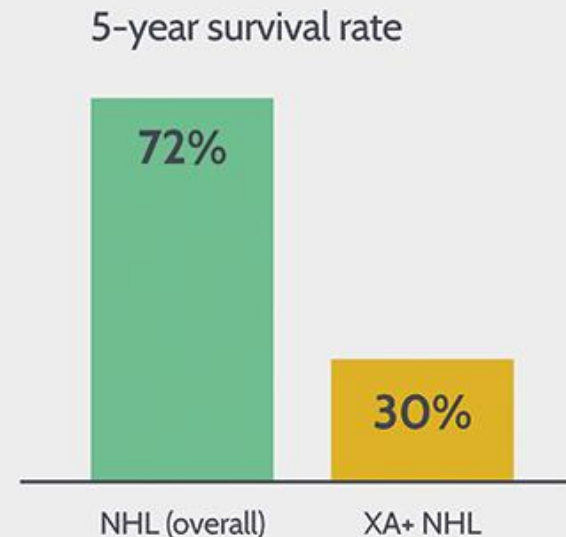
X-antigen positive (XA+) non-Hodgkin's lymphoma (NHL) is a particularly aggressive subtype of NHL with a poor prognosis¹

Worldwide, over **half a million** people are diagnosed with NHL per year¹

XA+ NHL is an aggressive subtype with rapid progression and a low survival rate¹



Of these,
15% are XA+¹



Natevba improved or maintained Quality of Life (QoL) for the duration of treatment in all five EuroQoL domains



Mobility



Self-Care



Usual Activities



Pain

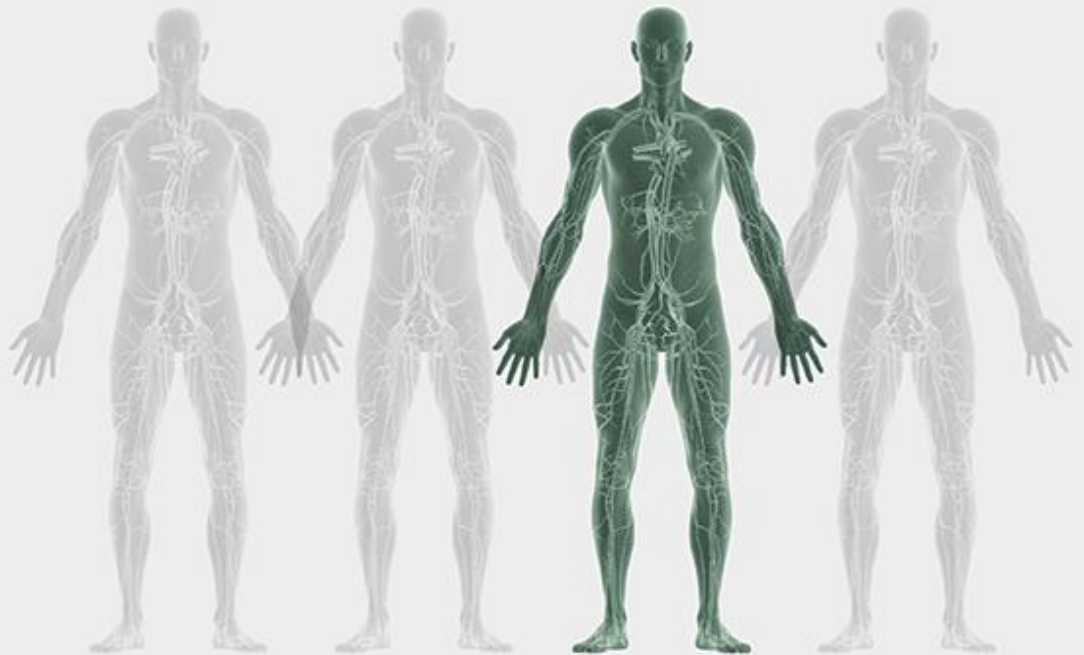


Depression

- Patients showed signs of increased activity along with greater than 5-point increases in self-reported daily activities
- Fewer than 10% of patients taking Natevba reported pain or significant discomfort as a side effect during treatment
- Depression and anxiety were noted in less than 1 out of every 5 patients

Current treatments do not effectively target malignant cells and therefore have high toxicity¹

- Unlike in other types of NHL, rituximab shows poor efficacy in XA+ subtypes and is generally not used¹
- Chemotherapy is the standard of care, but it has limited efficacy and high toxicity¹



1 in 4 XA+ NHL patients discontinue chemotherapy due to adverse events¹

Manageable Natevba dosing schedule lets patients get on with life¹



Natevba[®] has a convenient 4-weekly infusion schedule¹

- The recommended adult dose is 1.8 mg/kg administered as an intravenous infusion over 30 minutes every 4 weeks



1

Natevba[®] is indicated as monotherapy, freeing patients from the burden of chemotherapy¹

Natevba[®] should be administered under the close supervision of an experienced healthcare professional. Please see the full prescribing information and important safety information.¹

A comprehensive clinical trial program designed to establish Natevba safety and efficacy across XA+ NHL patient subgroups¹

Phase III

VENTURE² (Complete)

Phase III multicenter study of Natevba[®] vs CVP chemotherapy alone in 596 patients with previously untreated XA+ NHL

See the study design



VENTURE ADVANCE⁴ (Recruiting)

Phase III multicenter study of Natevba[®] + CHOP vs R-CHOP in 632 patients aged ≥ 60 years with XA+ NHL

VENTURE PLUS³ (Recruiting)

Phase III multicenter study of Natevba[®] + CVP vs CVP chemotherapy alone in 1,018 patients with previously untreated XA+ NHL

Phase II

VISION⁵ (Complete)

Phase II multicenter, single-arm study in 166 patients with relapsed or refractory (rr) XA+ NHL

See the study design



CVP = chemotherapy with a regimen of cyclophosphamide, vincristine, and prednisone; NHL = non-Hodgkin lymphoma; R-CHOP = chemotherapy regimen of cyclophosphamide, doxorubicin, vincristine, and prednisone plus rituximab; rr = relapsed or refractory; XA+ = X-antigen positive.

1. Natevba[®] (vevasumab) Full Prescribing Information

2. Vincent A. et al. *Cancer Therapy and Management* 2020;22(1):87-88.

3. ClinicalTrials.gov (2022). Efficacy and safety of vevasumab injection plus CVP vs CVP alone in previously untreated XA+ non-Hodgkin lymphoma. Available at: <https://clinicaltrials.gov/ct2/show/NCT10987654321> [Accessed: October 2022].

4. ClinicalTrials.gov (2022). Efficacy and safety of vevasumab injection plus CHOP vs R-CHOP in previously untreated XA+ non-Hodgkin lymphoma. Available at: <https://clinicaltrials.gov/ct2/show/NCT12345678910> [Accessed: October 2022].

5. Jones L. et al. *Cancer Therapy and Management* 2022;24(5):352-354.

XA+ NHL is a fictional subtype of a real disease. All content shown here, including claims, data and references, are fictional and intended to represent a hypothetical clinical scenario.



NATEVBA (vevasumab)

- Natevba is an innovative new treatment targeting X-antigen¹
- Natevba is indicated for the first-line treatment of X-antigen positive (XA+) non-Hodgkin's lymphoma¹

